

Cristalli

PROFESSIONAL

Natural



1.0 | Black



2.10 | Blue Black



3.0 | Dark Brown



4.0 | Brown



5.0 | Light Brown



6.0 | Dark Blonde



7.0 | Blonde



8.0 | Light Blonde



9.0 | Very Light Blonde



10.0 | Extra Light Blonde

Intense Natural



4.00 | Intense Brown



5.00 | Light Intense Brown



6.00 | Dark Intense Blonde



7.00 | Intense Blonde



8.00 | Light Intense Blonde



9.00 | Very Light Intense Blonde

Ash



5.1 | Light Ash Brown



6.1 | Dark Ash Blonde



7.1 | Ash Blonde



8.1 | Light Ash Blonde

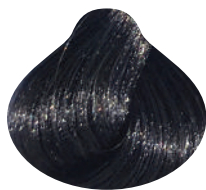


9.1 | Very Light Ash Blonde



10.1 | Extra Light Ash Blonde

Intense Ash



6.11 | Dark Intense Ash Blonde



7.11 | Intense Ash Blonde



8.11 | Light Intense Ash Blonde



9.11 | Very Light Intense Ash Blonde

Ash Violet



5.12 | Light Brown Ash Violet



6.12 | Dark Blonde Ash Violet



7.12 | Blonde Ash Violet

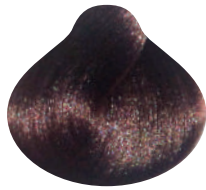


8.12 | Light Blonde Ash Violet



9.12 | Very Light Blonde Ash Violet

Velvet



7.2 | Royal Velvet



8.2 | Velvet Aura



9.2 | Velvet Blonde

Violet Pearl



7.21 | Violet Wonder



8.21 | Violet Mist



9.21 | Violet Pearl



10.21 | Iced Violet Pearl

Beige



6.23 | Dark Beige Blonde



7.23 | Beige Blonde



8.23 | Light Beige Blonde



9.23 | Very Light Beige Blonde



10.23 | Extra Light Beige Blonde

Golden



5.3 | Light Golden Brown



6.3 | Dark Golden Brown



7.3 | Golden Blonde



8.3 | Light Golden Blonde



9.3 | Very Light Golden Blonde

Ash Brown



6.71 | Dark Blonde Ash Brown



7.71 | Blonde Ash Brown

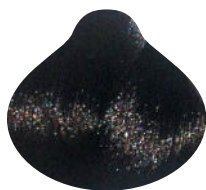


8.71 | Light Blonde Ash Brown



9.71 | Very Light Blonde Ash Brown

Coffee Collection



4.73 | Espresso



5.73 | Mocha



6.73 | Coffee



7.73 | Cappuccino

Chocolate Brown



4.77 | Dark Chocolate



5.77 | Chocolate



6.77 | Cocoa

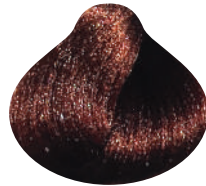


7.77 | Truffle

Copper



5.4 | Autumn Ember



6.4 | Copper Montage



7.44 | Vivid Flame

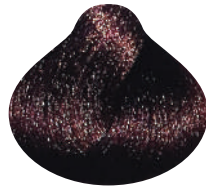


8.44 | Copper Inferno

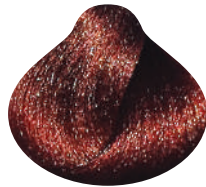
Red & Mahogany



4.5 | Deep Mahogany



5.56 | Rich Mahogany Red



6.5 | Mahogany Rogue

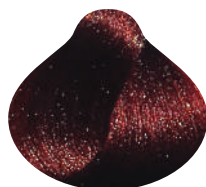


6.56 | Sassy Mahogany Red



7.56 | Crimson

Intense Red



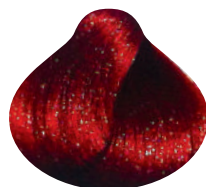
4.66 | Red Desire



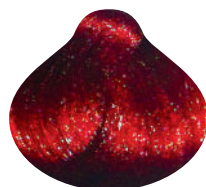
5.66 | Ruby Red



6.66 | Raging Red



7.66 | Wild Cherry



8.66 | Scarlet

Intense Violet



4.22 | Deep Violet



5.22 | Plum Violet



6.22 | Vintage Violet



7.22 | Royal Violet

Ice Blonde

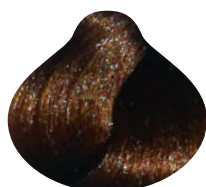


9.201 | Silver Ice Blonde



9.206 | Pink Ice Blonde

Metallic Blonde



8.93 | Metallic Quartz



9.93 | Metallic Blonde

Ultra Blonde



10.01 | Ultra Light Ash Blonde



10.02 | Ultra Light Pearl Blonde



10.08 | Ultra Light Silver Blonde



10.11 | Ultra Light Intense Ash Blonde



10.22 | Ultra Light Violet Blonde

Arctic Super Blonde



11.0 | Arctic Light Blonde



11.16 | Arctic Titanium Blonde



11.20 | Arctic Violet Platinum Blonde



11.81 | Arctic Pearl Ash Blonde



12.00 | Arctic Super Light Blonde



12.01 | Arctic Light Ash Blonde



12.89 | Arctic Platinum Pearl Blonde

Toners



Ice



Silver



Pearl



Champagne



Pearl Ash Blonde



Graphite

Meches - Lift & Deposit



Magenta



Red Violet



Red

Intensifiers



.22 | Violet



.56 | Fuchsia



.66 | Red



.81 | Silver Pearl

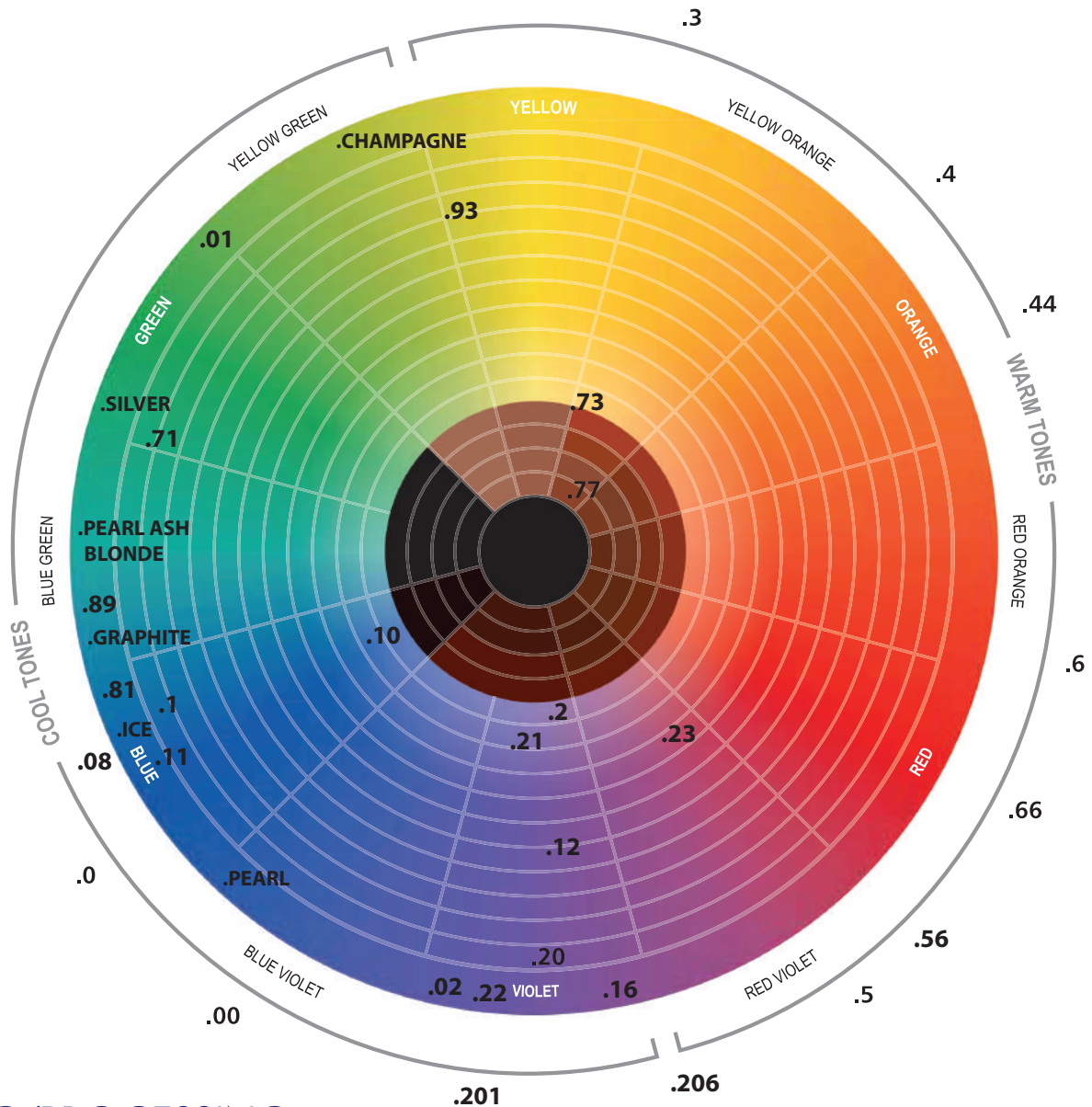


.91 | Silver

Neutral



000 | Neutral



MIXING/PROCESSING

PERMANENT CREME COLOUR

- Mixing Ratio – 1:1.5
- Processing Time – 30 to 45 minutes

SEMI/DEMI COLOURING

- Mixing Ratio – 1:2
- Processing Time – 20 to 30 minutes

ICE BLONDE & METALLIC BLONDE

- Tint Mixing Ratio – 1:1.5 Lifts up to 4 levels
- Tint Processing Time – 30 to 45 minutes
- Toning Mixing Ratio – 1:2
- Toning Processing Time – Visual up to 30 minutes

ULTRA BLONDE

- Tint Mixing Ratio – 1:2 Lifts up to 4 levels
- Tint Processing Time – 45 to 60 minutes
- Toning Mixing Ratio – 1:2
- Toning Processing Time – Visual up to 30 minutes

ARCTIC SUPER BLONDE

- Tint Mixing Ratio – 1:2 Lifts up to 4 levels
- Tint Processing Time – 45 to 60 minutes

NEUTRAL 000

The Neutral 000 can be mixed with the Ultra & Arctic Super Blonde series or any Cristalli shade in equal parts to increase lift capability by one level.

- Tint Mixing Ratio – 1:1.5
- Ultra & Arctic Super Blonde Mixing Ratio – 1:2

TONERS

- Mixing Ratio – 1:2
- Processing Time – Visual up to 30 minutes

INTENSIFIERS

The intensifiers are designed to enhance reflect or intensify tone to your colour selection. No extra peroxide is required, do not exceed 30ml per 100ml of tint.

MECHES – LIFT & DEPOSIT

- Mixing Ratio – 1:1.5
- Processing Time – 15 minutes with heat or 30 minutes without heat

FINAL STEP

When processing time is complete, rinse hair with lukewarm water. Detangle hair with a wide tooth comb, then rinse thoroughly. Wash hair with after care shampoo.

THIS PRODUCT IS EXCLUSIVELY FOR PROFESSIONAL USE.

PLEASE REFER TO THE SALON MANUAL FOR FULL PRODUCT DETAILS.



CRISTALLI PROFESSIONAL HAIR CARE



CRISTALLI_PROFESSIONAL