

THE ULTIMATE PRO TOOL TO BOOST YOUR CREATIVITY & PRO-COLOUR PALETTE

## NEW Dia light Boosters



### How to Use

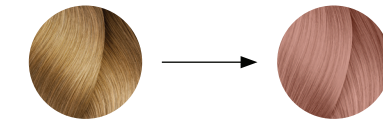
#### Mixing with a bottle:

Mix in a ratio of 1:1.5,  
50ml of Dia light colour cream (including the Booster) + 75ml of Diactivateur

#### How to dose less than 1 gram of booster for the lightest levels (8, 9 & 10) in a non-metallic colour bowl:

- On the lightest levels, the Booster can show quite quickly
- If you need less than one gram of booster, add 1, 2 or 3 drops (1g equals 3 drops)

49g 9.03 + 1 drop of Red Booster + 75ml 9 VOL



48g 9.03 + 2 grams Red Booster + 75ml 9 VOL



**Step 1:** Add the Booster into the chosen shade

**Step 2:** Stir to mix the Booster into the shade

**Step 3:** Add the Diactivateur

Use exclusively with the recommended developers, 6 volume (1.8%), 9 volume (2.7%) or 15 volume (4.5%) maximum. – Do not use with hydrogen peroxide greater than 15 vol. (4.5%) – Use only the proportions indicated.

Always refer to leaflet inside the colour packaging for full instructions.

**L'ORÉAL PROFESSIONNEL PARIS**

For more information visit  
[www.lorealprofessionnel.com.au](http://www.lorealprofessionnel.com.au)  
 @lorealpro\_education\_aus | @lorealpro\_education\_nzl

**Dia light**  
 Acid tone on tone colouration.  
 Zero ammonia. Zero lift. Ultra conditioning.

**L'ORÉAL PROFESSIONNEL PARIS**

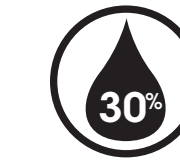
# Dia light



**Controlled application.**  
Gel-crème consistency for precision application.



**Flexible processing time.**  
(5-20 minutes).

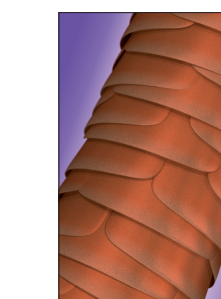


**+30% more conditioning\*.**  
Conditions hair after lightening and colour services.

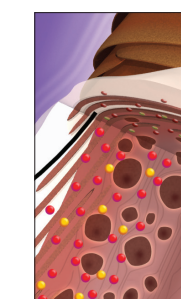
\*vs. uncoloured hair



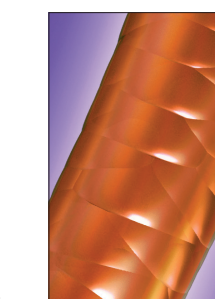
### [Science behind Dia light]



**Before colour.**  
On colour-treated & sensitised hair, the cuticle scales are already open.



**During colour.**  
Dia light has an acid pH close to the natural pH of the hair.  
There is no lift with gentle penetration of colourants for long lasting colour.

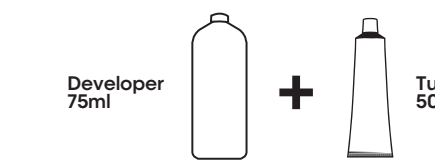


**After colour.**  
The cationic polymers in Dia light have a resurfacing effect on the cuticle, leaving the hair with amazing shine.

	Ash & Metallics							Iridescent				Cool Browns & Blondes			Mochas		Neutrals	Warm Browns & Blondes			Golds			Coppers			Reds		
	.01	.1	.07	.11	.15	.18	.19	.28	.02	.2	.21	.22	.12	.13	.23	.8	.82		.31	.32	.03	.3	.15	.34	.35	.40	.43	.46	.4
10																													
9																													
8																													
7																													
6																													
5																													
4																													
3																													

### Preparation

**1:1.5 mixing ratio**  
75ml of Diactivateur to 1 tube (50g)  
Measure 75ml of 6-vol, 9-vol or 15-vol Diactivateur depending on the desired intensity of the result.



### Application

On dry hair, spray Metal Detox Pre-Treatment Spray on each section and apply Dia light formula with a brush or a bottle on the re-growth, mid-lengths and ends.  
**Flexible processing time: 5 to 20 minutes**

### Rinsing

When development time is complete, add a little warm water to the hair and gently emulsify.  
Thoroughly rinse colour from the hair and shampoo with Metal Detox Shampoo to pro guarantee your colour result. Follow with Metal Detox mask and or care for cosmeticity.

### Boosters Dosage

	[Cool Boosters]	[Warm Boosters]
10	From 1g to 2g of Booster inside the total of 50g of colour cream	From 1g to 3g of Booster inside the total of 50g of colour cream
9	From 3g to 4g of Booster inside the total of 50g of colour cream	From 4g to 8g of Booster inside the total of 50g of colour cream
8	From 4g to 6g of Booster inside the total of 50g of colour cream	From 6g to 12g of Booster inside the total of 50g of colour cream
7	3/4 Dia light shade, 1/4 Dia light Booster.	1/2 Dia light shade, 1/2 Dia light Booster.
6	1/2 Dia light shade, 1/2 Dia light Booster.	OR Pure Dia light Booster.
5	1/2 Dia light shade, 1/2 Dia light Booster.	OR Pure Dia light Booster.
4	1/2 Dia light shade, 1/2 Dia light Booster.	OR Pure Dia light Booster.
3	1/2 Dia light shade, 1/2 Dia light Booster.	OR Pure Dia light Booster.
2	1/2 Dia light shade, 1/2 Dia light Booster.	OR Pure Dia light Booster.
1	1/2 Dia light shade, 1/2 Dia light Booster.	OR Pure Dia light Booster.

**Dia light Booster Shades**

**Cool Boosters**

Violet Ash Matte

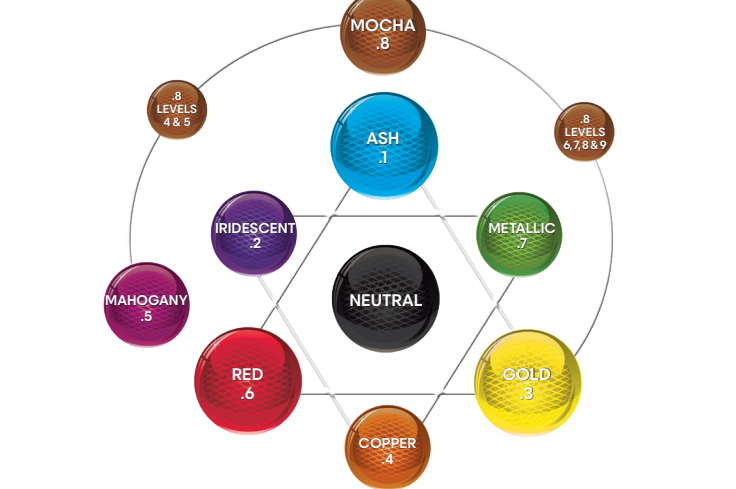
**Warm Boosters**

Gold Copper Red

**!** To avoid undesired results, do not mix Ash Booster or Matte Booster with any of the "chromatic" copper or red shades (containing Rubilane, Carmilane or DM5 dyes).  
Quantities of product can be increased if more is required, provided that the proportions 1:1.5 are respected (to make a half dose for example).  
**BOOSTER QUANTITY:** From 1/8 to 100% of 50ml colour mix (Dia light shade and/or clear + booster) + 75ml Diactivateur

### Colour Theory

- Opposite colours on the colour wheel will counteract or neutralise each other.
- Opposite colours on the colour wheel are also complementary.



### Numbering System

